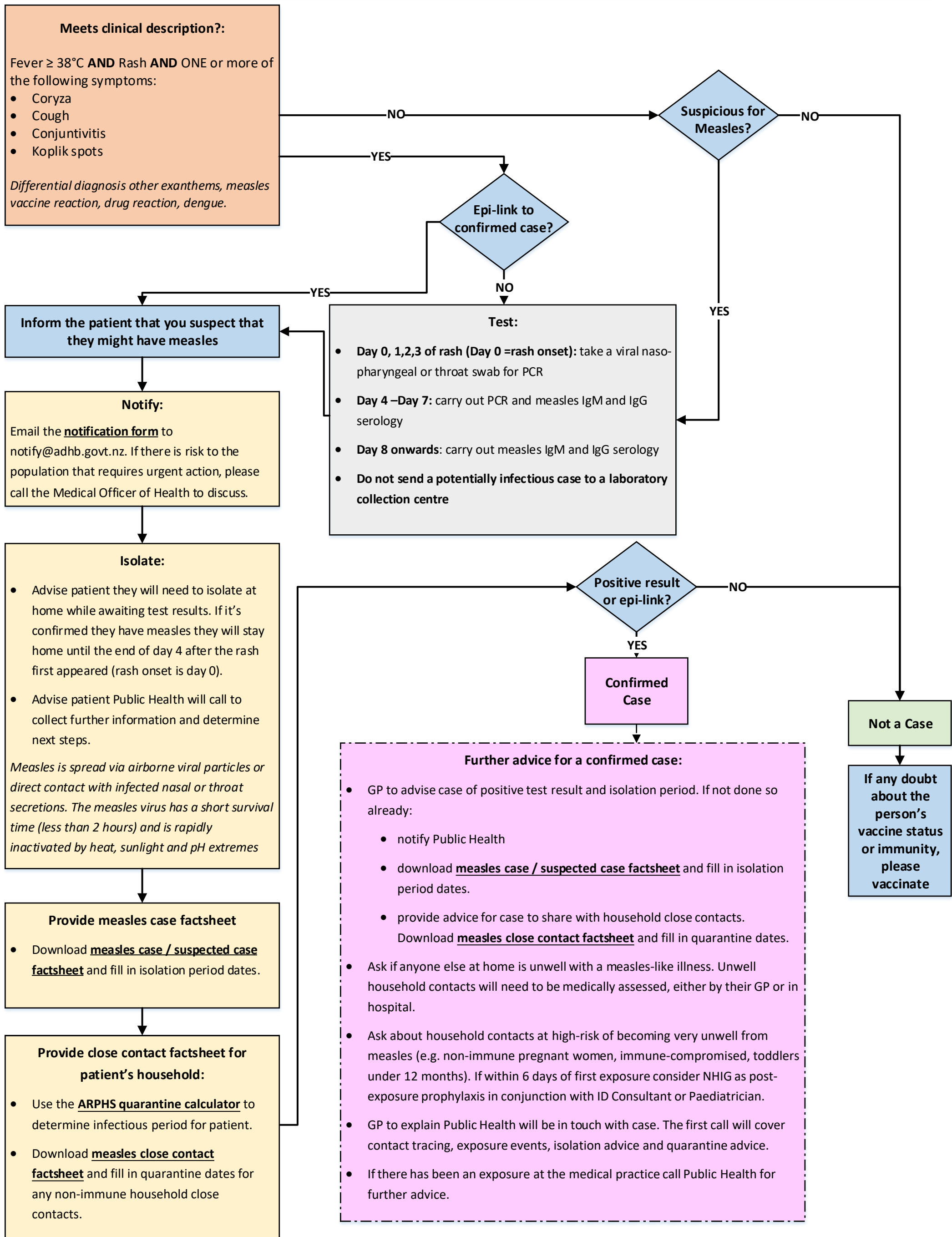


MEASLES CLINICAL PATHWAY FOR HEALTH PROFESSIONALS



You are considered **IMMUNE** to Measles if you were born prior to 1969, diagnosed with Measles previously, received two doses of the MMR vaccine, or have serological (IgG) evidence of immunity.

Measles information and advice: www.arphs.health.nz/measles